

COURBES : série 2

Exercice

Associer à chaque tableau de variation la courbe qui lui correspond :

1)

x	$-\infty$	0	$+\infty$
f'(x)	+	0	-
f(x)	0	↗ 2 ↘	0

2)

x	$-\infty$	1	$+\infty$
f'(x)	+	0	-
f(x)	-1	↗ $+\infty$ ↘	-1

3)

x	$-\infty$	1	$+\infty$
f'(x)	-	0	+
f(x)	$+\infty$	↘ -1 ↗	$+\infty$

4)

x	$-\infty$	-1	$+\infty$
f'(x)	+	0	-
f(x)	-1	↗ $+\infty$ ↘	-1

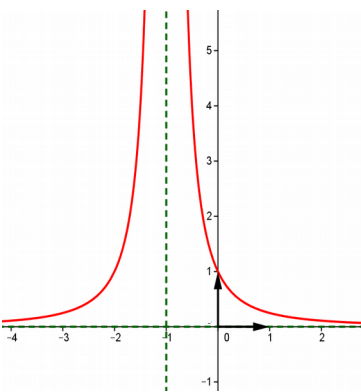
5)

x	0	1	$+\infty$
f'(x)	-	0	+
f(x)	$+\infty$	↘ -1 ↗	0

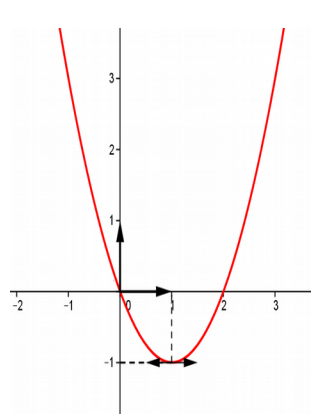
6)

x	$-\infty$	-1	$+\infty$
f'(x)	+	0	-
f(x)	-1	↗ $+\infty$ ↘	-1

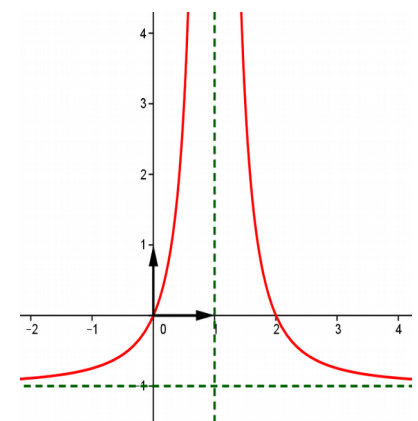
a)



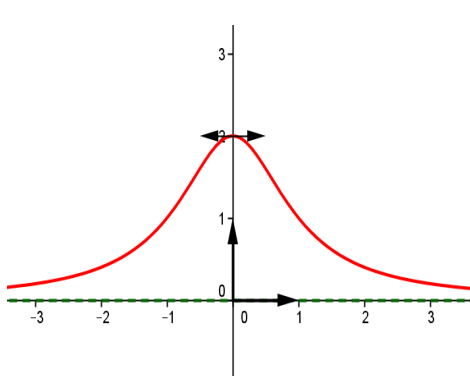
b)



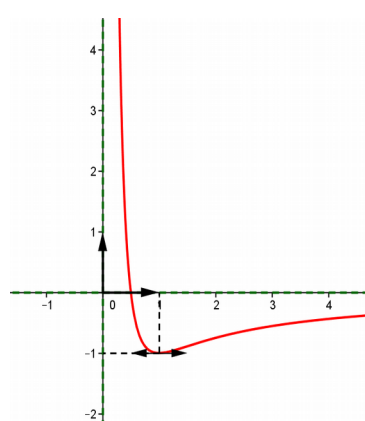
c)



d)



e)



f)

